

*le boat*

# TRENT-SEVERN

Region Guide







North Route		Approx time		Number of locks		Swing bridges
	Scott's Mills	10min	5hr 30min	0	7	0
	Peterborough	30min		1		0
	Ashburnham	45min		1		0
	Peterborough Hydraulic lift lock	1hr 30min		1		1
	Nassau Mills	30min		1		0
	Otonabee	45min		1		0
	Douro	40min		1		0
	Sawer creek	45min	6hr 45min	1	6	0
	Lakefield	1hr 30min		1		0
	Youngs Point	30min		1		0
	Clear Lake	1hr 15min		1		0
	Hells Gate	1hr 15min		1		0
	Burleigh Falls	45min		1		0
	Lovesick	1hr 30min	4hr 30min	1	3	0
	Buckhorn	2hr		1		0
	Gannon Narrows	45min		1		1
	Pigeon Lake	1hr 45min	7hr 45min	1	5	0
	Bobcaygeon	45min		1		0
	Surgeon Lake	2hr		1		0
	Lindsay	1hr 30min		1		0
	Fenelon Falls	1hr 15min		1		0
	Rosedale	2hr 15min		1		0
	Kirkfield					

South Route		Approx time		Number of locks		Swing bridges
	Peterborough	10min	6hr 45min	0	0	0
	Otonabee river entry	30min		0		0
	Hastings	45min	6hr	1	6	1
	Trent River	1hr 30min		0		0
	Nassau Mills	30min		3		0
	Healey Falls	45min		2		1
	Campbellford	40min	7hr 15min	2	6	1
	Hagues Reach	45min		1		0
	Meyers	1hr 30min		1		0
	Percy Reach	30min		1		1
	Glen Ross	1hr 15min		1		0
	Frankford	1hr 15min	3hr 30min	1	5	0
	Trent	45min		1		0
	Batawa	1hr 30min		2		0
	Sidney	2hr		1		0
	Trenton					

Times are an approximation only based on an average speed of 8km/h and 30 minutes to pass through a lock chamber. Your speed (the boats are limited to 10km/h), the flow of the river and the time it takes to go through locks will all affect your progress.

## **PETERBOROUGH BASE**

Our base on the Trent Severn Waterway is located along the Otonabee River, in Peterborough. Horseshoe Bay Marina, previously known to locals of the Peterborough area as Willow Bend Marina. The location of our Peterborough base offers our customers an idyllic starting point for exploring the stunning waterways of the region. Situated roughly mid-way along the Trent-Severn Waterway, this base provides easy access to the vast network of lakes, rivers, and canals that the region has to offer.

Our historic lock stations also make interesting stops with a variety of accommodations on offer. You can even set up a tent alongside the waterway and enjoy a night in the great outdoors. Camping is a fun and affordable way to immerse yourself in the Trent-Severn Waterway as you travel through our system.

From here, our customers can embark on their epic cruising adventure, discovering the natural beauty of the Kawarthas and beyond.

# NORTH ROUTE

## SCOTTS MILLS

Established in 1843, Scotts Mills owes its name to Adam Scotts, an early settler who arrived in the area in 1819 and erected both a lumber mill and a distillery. This lock holds significant historical importance as one of the oldest within the waterway system, being the sole surviving limestone lock from the original construction phase.



**Recommended restaurant:** Dockers Fish & Chips.



**Amenities:** Convenience store and McKnights gift shop.

**Farmers Market:** Saturdays, parking lot of the Memorial Centre.

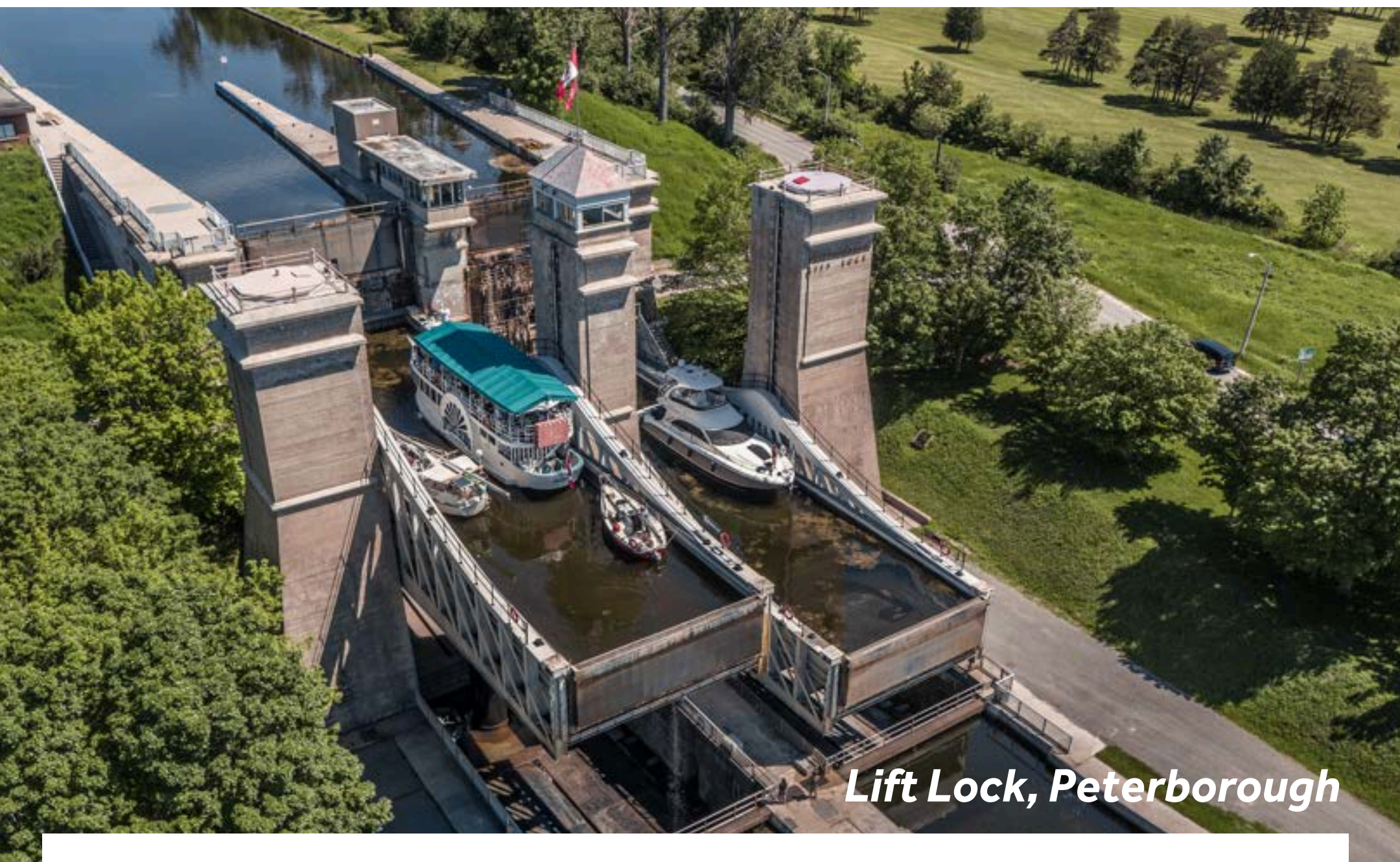
---

## NASSAU MILLS

The lock's upper area offers a serene and peaceful atmosphere, perfect for spending the night. Boaters often choose to stop here due to its well-maintained picnic areas, as well as the nearby park, making it a popular choice for a relaxing break.



# PETERBOROUGH



*Lift Lock, Peterborough*

Peterborough, founded in 1820, offers a range of services and shops. The city quickly became a busy spot for social and business activities along the Trent River and gained fame for its handmade canoes, recognized worldwide. For over 25 years, The Canadian Canoe Museum has preserved the world's largest and most significant collection of canoes, kayaks, and paddled watercraft. With more than 600 vessels, the museum offers a fascinating glimpse into the history, culture, and craftsmanship of water travel. Now housed in a stunning new waterfront location, this one-of-a-kind museum brings Canada's rich paddling heritage to life. Rent a canoe or experience a group paddle on a voyager canoe – pre book your spot for the summer season. The city also has numerous historic sites, art galleries, parks and other musuems. If you're in Peterborough on a Wednesday or Saturday during the summer, don't miss Peterborough Musicfest - Canada's longest-running free concert series, featuring open-air performances and easily accessible by boat.



One of the most iconic features of the Trent-Severn Waterway is the Peterborough Lift Lock – Lock 21. This engineering marvel, completed in 1904, remains one of the tallest hydraulic lift locks in the world, with a lift of 19.8 meters (65 feet). Ascending or descending this lock is nothing short of spectacular, offering panoramic views of the surrounding landscape. The lock operates on a balance system: water is let into the upper chamber, a connecting valve is opened, and the heavier chamber automatically descends, forcing the lower chamber to begin a new cycle. In 2024 alone, 4,300 vessels were locked through, proving that this National Historic Site is a must-see attraction for boaters and land-based visitors alike.

*Lift Lock, Peterborough*





The Trent-Severn Waterway also offers unique overnight stays that make any summer trip unforgettable. Roofed accommodations like the family-friendly oTENTik at Duro Lock 24 (north of Peterborough) and the teardrop-shaped Ôasis pods at Locks 9 and 10 (to the south) are perfect for kids and come with campfire and canoe access. These popular spots book up quickly in summer - reserve ahead at [parks.canada.ca](https://parks.canada.ca) or [parks.canada.ca/oasis](https://parks.canada.ca/oasis).



**Recommended restaurant:** Riverside Grill & Gazebo, George St. – dock your boat while you dine!



**Amenities:** Near the marina, No Frills supermarket, pharmacy, bakery.





# LAKEFIELD

Lakefield is full of history and has kept many beautiful old buildings from the 19th century. If you're feeling energetic, you can go for a bike ride on the Millennium Trail. It goes around Lakefield and runs alongside the river, connecting with other trails all the way to Peterborough. Stop at Peterborough County Tourism & Economic Development on Queen street to find out more about the numerous festivals and activities that are happening in spring and summer. If you fancy a swim, there is a sandy beach on the west side of the river (The Lakefield Beach).





**Recommended restaurant:** Canoe and Paddle: A popular English pub and restaurant offering craft beer, top quality local music and amazing daily specials and events. Situated in the Hamblin's building alongside the river.

**Amenities:** Grocery store, liquor store, pharmacy, banks.

**Farmer's Market:** Thursdays, behind the Lakefield Marina.



*Haig Point, Lakefield*

# YOUNGS POINT

As you near Youngs Point, you will observe a shift in the scenery. The soft limestone and grassy marshes begin to transition into the rugged rock formations of the Canadian Shield. A stop at Youngs Point offers a pleasant opportunity to take a break, stretch your legs, and do some shopping or grab a bite to eat.



It's a favored spot for daytrippers, including cottagers and local tourists arriving by boat to enjoy a meal or take a stroll. As you near Youngs Point, you will observe a shift in the scenery. The soft limestone and grassy marshes begin to transition into the rugged rock formations of the Canadian Shield. A stop at Youngs Point offers a pleasant opportunity to take a break, stretch your legs, and do some shopping or grab a bite to eat. It's a favored spot for daytrippers, including cottagers and local tourists arriving by boat to enjoy a meal or take a stroll.



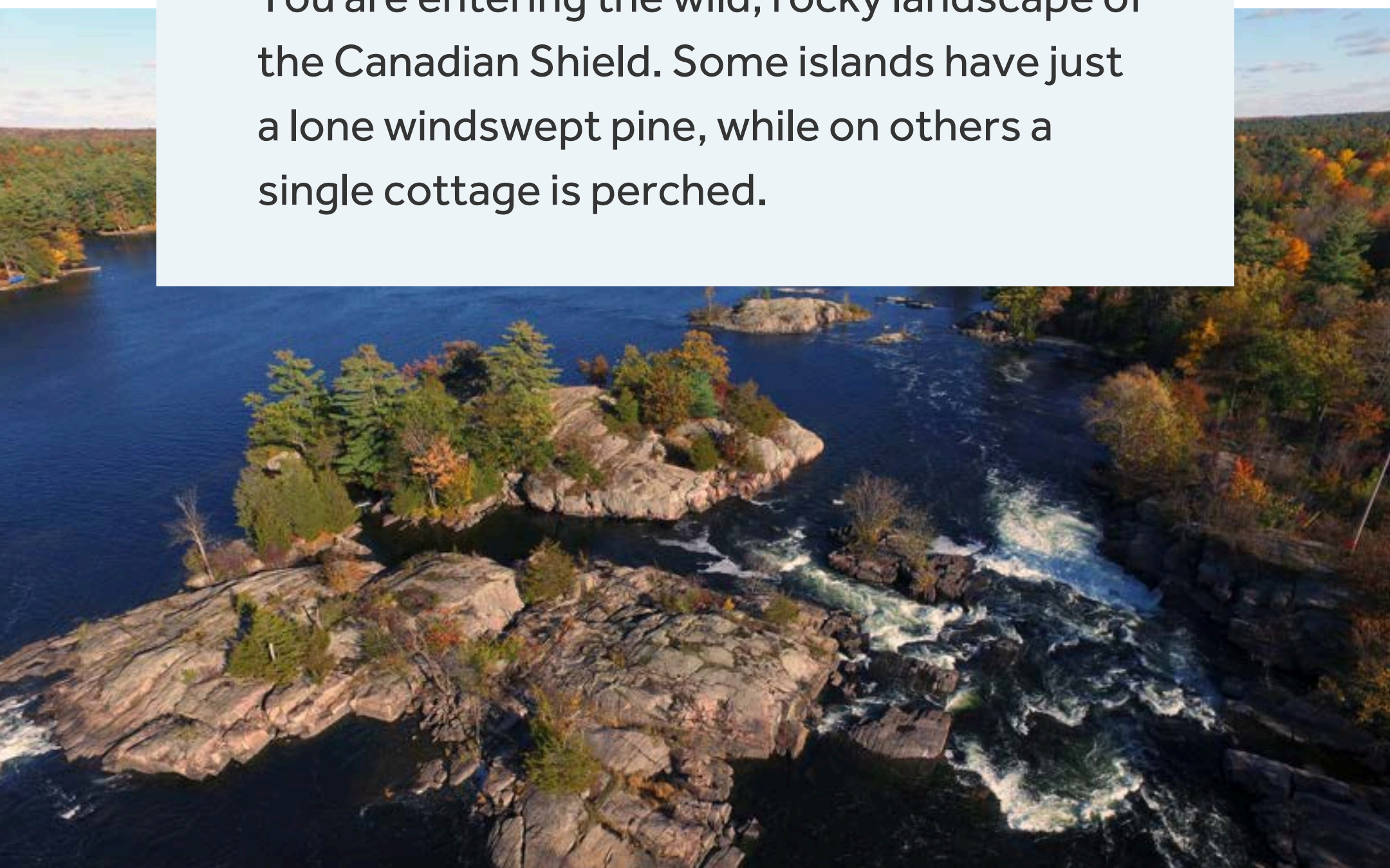
**Recommended restaurant:** Lock 27 Tap and Grill.



**Amenities:** Youngs Point General store.

## HELLS GATE

You are entering the wild, rocky landscape of the Canadian Shield. Some islands have just a lone windswept pine, while on others a single cottage is perched.





# STONEY LAKE

The lake takes its name for the rocks that are scattered randomly in the water, so be careful while you are cruising in the area and follow your navigation chart. Continue your journey to Juniper Island, where you will find docks and a store popular amongst cottagers. As you cruise past Juniper Island, you will reach a point where the alternate route diverges. Head east towards Mount Julien, Northey Bay, or Crowes Landing.

# BURLEIGH FALLS

Burleigh Falls offers first-class walleye fishing, especially during spring. You can also try fishing in the deep water below the lock with a worm harness or minnows. The small village of Burleigh Falls is a charming stopover, bustling with cottagers and boaters alike. Nestled amidst a picturesque series of rapids between Lovesick and Stoney Lakes, it offers a scenic and tranquil setting for visitors to enjoy. Please note: mooring is only available at the lock station.



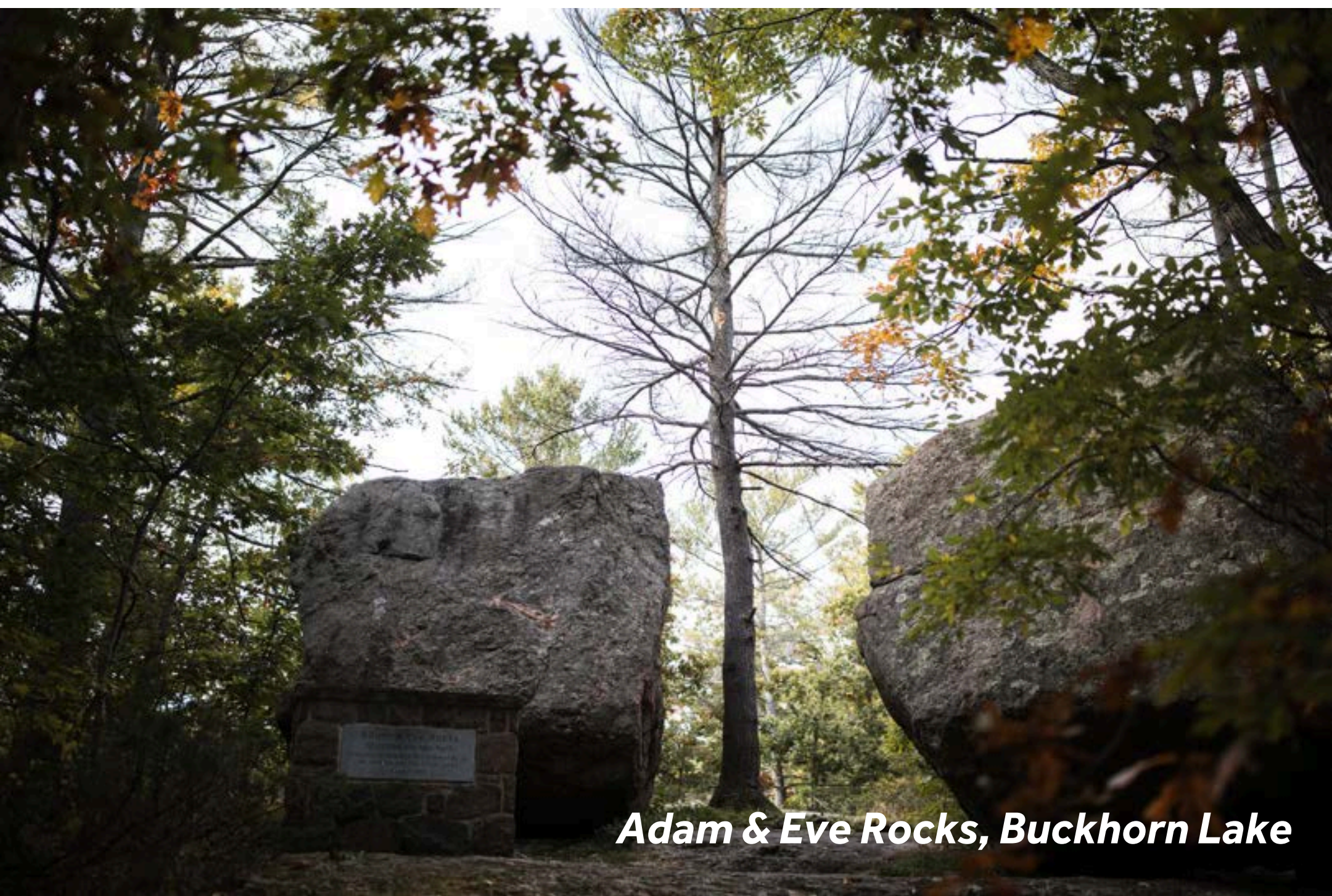
***Burleigh Falls***



# LOVESICK LAKE

According to the legend, Lovesick Lake earned its name from a tragic tale. It's said that Polly, the daughter of Chief Jack Cow, suffered from unrequited love. Heartbroken, she retreated to an island on the lake and fell dangerously ill from lovesickness. This story led to the lake being named Lovesick.

Lovesick is a popular overnight stop thanks to its island setting, remote location, and stunning natural surroundings. Lock 30 is uniquely situated on an island and is only accessible by boat — a rare feature on the Trent-Severn Waterway. Its peaceful seclusion and wilderness charm make it a favorite for those looking to truly unplug. Amenities are limited to the essentials: washrooms, a picnic area, ice, and firewood. It's a simple, scenic spot that offers a true back-to-nature experience.



***Adam & Eve Rocks, Buckhorn Lake***



# BUCKHORN

Lower Buckhorn continues the beautiful scenery from Lovesick. Its northern shores have smooth granite rocks and tall pine trees. On the south side, there is rolling limestone hills where turkey vultures' nest. You might spot them near Deer Bay's northwest entrance.



*Mainstreet Bar & Grill, Buckhorn*



**Recommended restaurant:** Mainstreet Bar and Grill - a wide menu serving from hamburgers and wings to salmon and pastas.



**Amenities:** Grocery Store, liquor store, bakery & pharmacy.

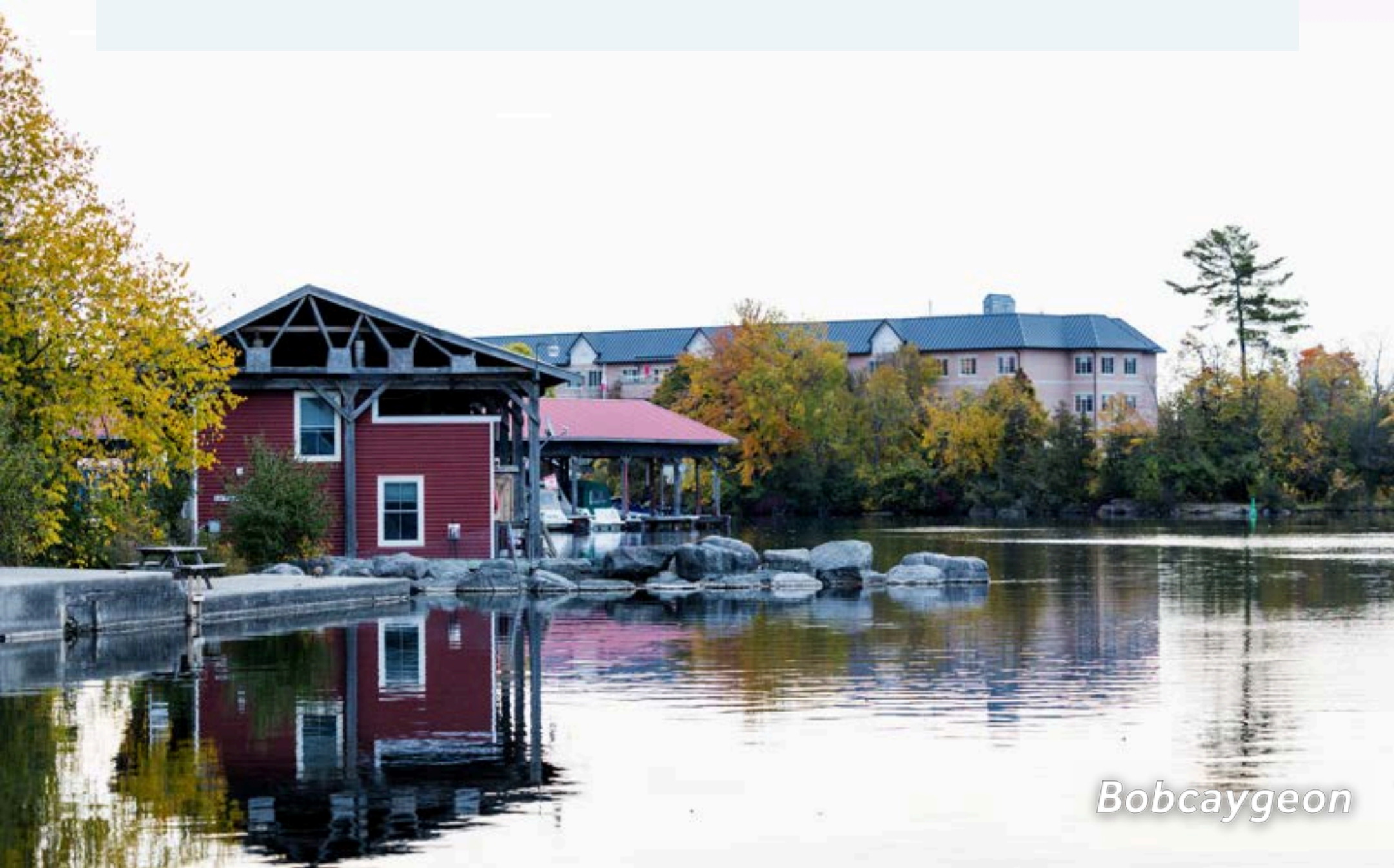


## DISCOVER FIRST NATION CULTURE AND TRADITIONS

First, you can take the longer route by heading south towards Harrington Narrow and Chemong Lake. Then, pass between Emerald Island and Curve Island to head back north towards Gannon village and Pigeon Lake.

Alternatively, you can head straight towards Gannon village, passing Fox Island and Nichol Island.

If you go the first way, you'll reach Curve Lake village, a local favorite. Take a taxi to Whetung Ojibwa Centre — well worth the visit for its incredible Indigenous art and crafts. If you're visiting in September, look out for the annual Pow Wow taking place in late September, a celebration of Indigenous culture through ceremony, dance and song.





# BOBCAYGEON

“The hub of the Kawarthas” is adorned with grand tree-lined streets and century-old buildings that harken back to the area’s bustling lumber industry heyday. You can enjoy a heritage walking tour of the city by visiting [bobcaygeon.stqry.app](https://bobcaygeon.stqry.app) and downloading the app on your phone (don’t forget to make the most of the great shopping and ice-cream stops along the way!). The Edgewood Dry Stone Wall is also not to be missed. These 400 feet, 134-year-old dry stone wall was recently restored, educational plaques are being installed in June that outline the restoration and the history. This is a pretty significant landmark as dry stone is a UNESCO recognized craftsman ship and the wall is one of only a few remaining in Canada. The wall was originally commissioned by the Boyd family, who were well known across Canada for their logging and Beefalo production. The Boyd family were also instrumental in the building of the Trent Severn Waterway, Bobcaygeon was the first lock built along the canal almost 2 centuries ago in 1833. To learn more about the Boyd family, visit the Boyd Heritage museum, dedicated to preserving the legacy of this influential family.



**Bobcaygeon**





**Recommended restaurant:** Bobcaygeon is also home to the largest waterfront outdoor patio in the Kawarthas - The Royal Moose Grill and Waterfront Patio at the Bobcaygeon Inn - which is only a block from the locks.



**Amenities:** Stock up at the local grocery store.

**Farmers market:** Sundays

# FENELON FALLS

Fenelon Falls is a lively spot, especially in summer. It's a top destination in the Kawarthas region, surrounded by beautiful lakes. Don't miss seeing the falls the town is named after - there are wooden walkways to a viewing platform. Nestled in downtown Fenelon Falls, the Colborne Street Gallery is a must-visit destination. Showcasing contemporary art, it offers a captivating selection of paintings, drawings, photos, sculptures, fibres, and other media. Additionally, the gallery highlights a curated collection of Inuit Art.



**Recommended restaurant:** The Locker at The Falls, and Murphy's Lockside Pub and Patio.



**Amenities:** Laundromat, Supermarket, Liquor store.





**Coboconk**

# COBOCONK

Coboconk sits at the northern end of the navigable part of the Gull River. On the west side of town, Lions Park has a public beach and swimming area, lots of playground equipment, picnic tables, and tennis courts. Coboconk is famous for having Canada's smallest jail. The jail is only about 4.57 meters by 8.84 meters (26.68 square meters), making it one of the smallest jails in North America. The jail was built in 1884, and it still has its original 2-foot-thick limestone walls from the local quarry, as well as its iron bars.

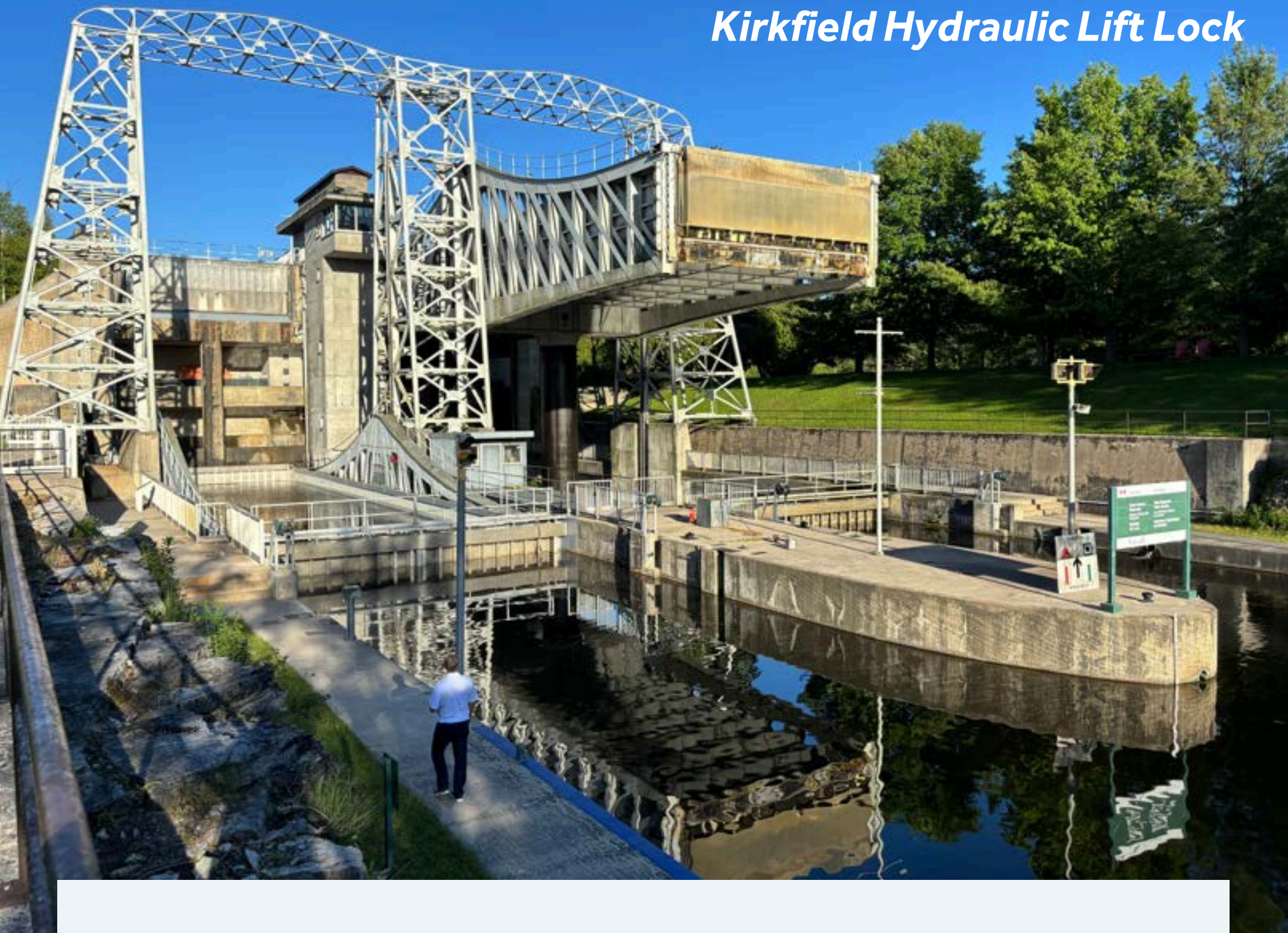


**Recommended restaurant:** Rosie's Dockside Bar & Grill serves up fresh family-friendly meals and is open for breakfast, lunch, and dinner.



**Amenities:** Almost everything is located on Hwy.35. Grocery store, beer store, landromat, pharmacy, post office.





### **KIRKFIELD HYDRAULIC LIFT LOCK**

KIRKFIELD HYDRAULIC LIFT LOCK is almost as impressive as the Peterborough Lift Lock. It's the highest point of the waterway. For nature enthusiasts, it's located at the southern end of the Carden Plain, which is a big, flat area with limestone and various types of forests and wetlands. On this plain, there's a rare habitat called alvar, home to many endangered bird and plant species. Please note that the town of Kirkfield is about 3.2 kilometers away from the lock. You'll need to walk a bit or take your bikes to get there.



**Recommended restaurant:** Sir William Mackenzie Inn.

# **SOUTH ROUTE**

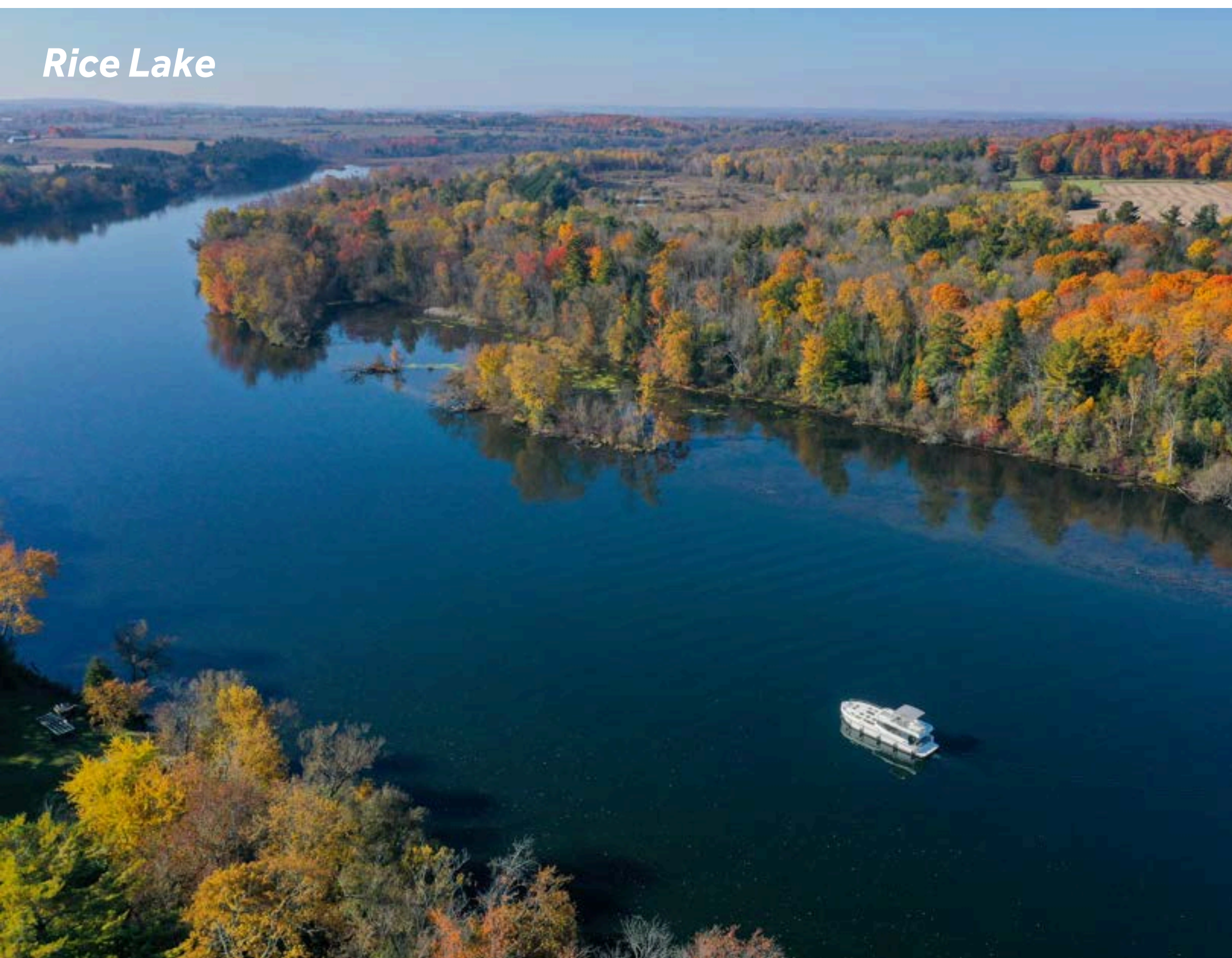


The open fields and tall trees along the Otonabee River are quite different from many parts of the Trent Severn.

# RICE LAKE

Rice Lake: It's the second largest lake on the waterway, following Lake Simcoe. Historically, it hosted vast wild rice beds that Native Americans harvested. Today, it's one of Ontario's prime spots for muskellunge fishing. While cruising the lake, if you're in need of a break, you have a couple of options. At the far western end of Rice Lake, in Bewdley, most businesses have docks where you can stop. Alternatively, further east, you can make a pit stop at Harwood. There, Harwood Family Variety offers homemade baked goods, and takeout, just beyond Memorial Park.

*Rice Lake*





# HASTINGS

Fishing is incredibly popular here, so much so that this hamlet was recently honored as “Canada’s Ultimate Fishing Town” and a giant fish sculpture “Pisces Pete” marks it. Anglers from both sides of the border, as well as visitors from Europe, flock here for fishing and relaxation. But if fishing isn’t your thing, fear not! There are many events during the summer in this bustling village. Street dances and festivals are just a few of them. For music lovers, Thursday evenings in the summer bring live performances to the park along the river. And for those who appreciate history and architecture, a self-guided tour of the village’s heritage Victorian houses is a must. For hiking enthusiasts, the Trans Canada Trail passes through Hastings along the old railway line, offering a scenic route for exploration.



*Hastings*



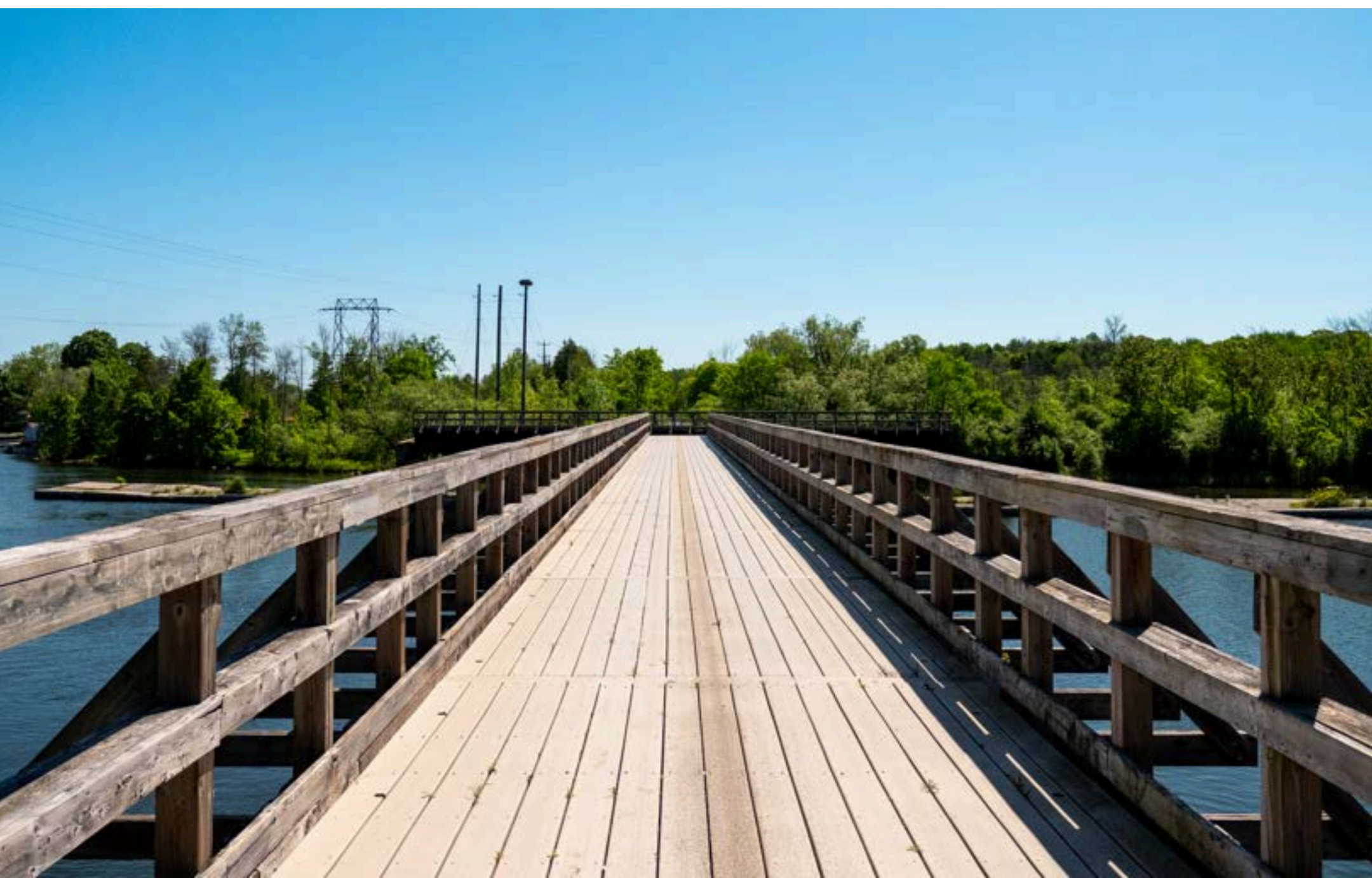


**Recommended restaurant:** McGillicafey's Pub & Bistro for house -smoked meats, pizzas, pastas and craft beers.



**Amenities:** The majority of stores are located on the north side of the river. You'll find a supermarket, beer and liquor stores, a bank, a laundromat, and giftshops there.

**Market:** Open air market every Saturday morning.





# CAMPBELLFORD

This is an ideal stop between Peterborough and Trenton. Campbellford proudly calls itself the home of the Toonie, as the artist who created the polar bear on the \$2 coin is from the area. A 6-meter replica of the coin stands tall in Old Mill Park along the river. Exploring Campbellford on foot is best. The town's historical buildings include two museums: one houses a personal collection of WW II memorabilia, while the other is a community local history museum. A short taxi ride will take you to the Empire Cheese Factory, which is owned and operated by local farmers. There's an outlet open to the public, and visitors can observe the cheese-making process through glass doors. Finally, no trip to



Campbellford is complete without a stop at Dooher's Bakery (celebrated 75 years in 2024 and voted Canada's Sweetest Bakery multiple time). Go early!



**Recommended restaurant:** Capers Tap House or The Dockside Bistro - dock right outside!



**Amenities:** All essentials are conveniently within walking distance from the river. You'll find a grocery store, laundromat, and more nearby. landromat, pharmacy, post office.

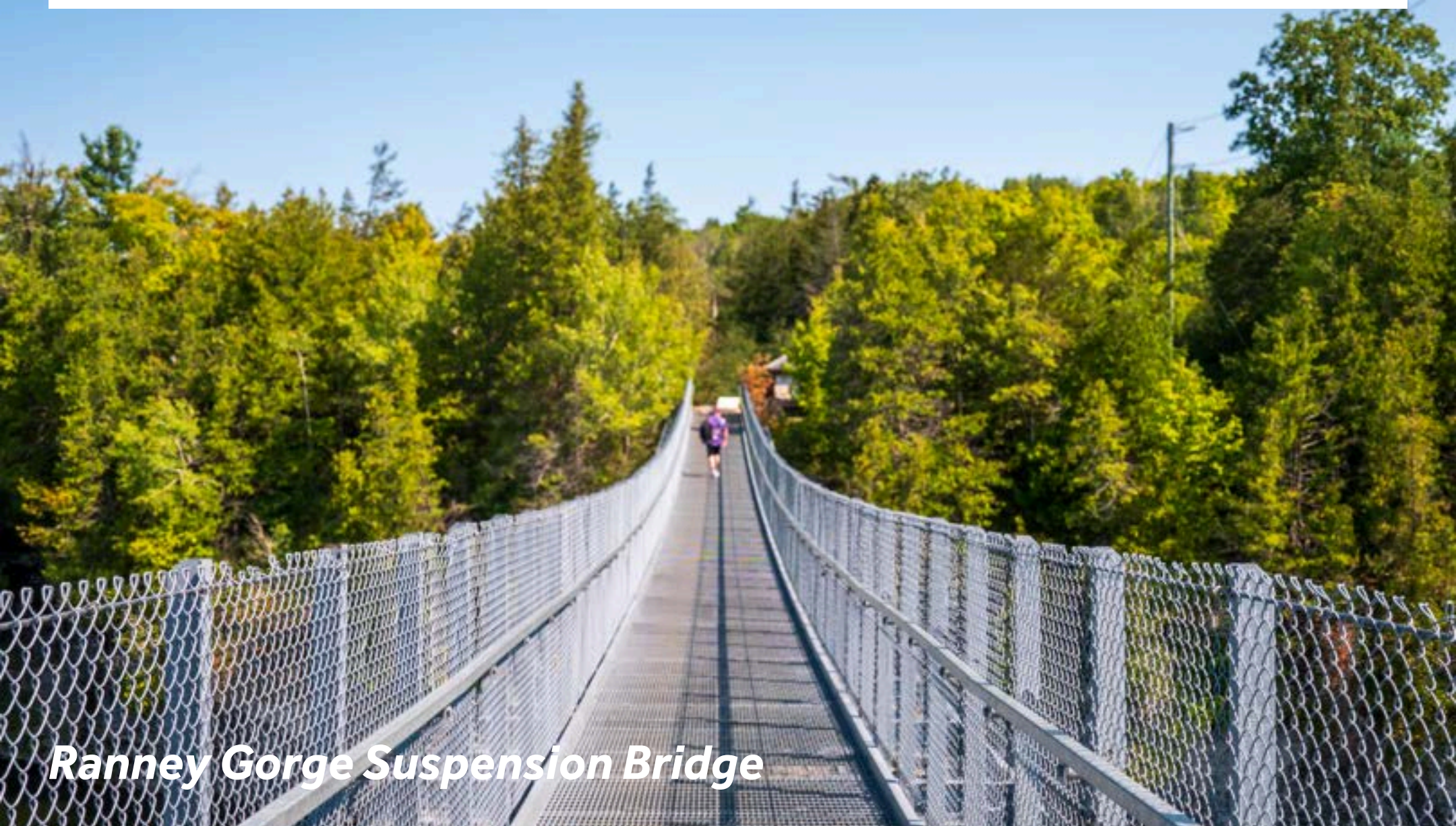
**Market:** Market square, Saturday morning.





***Campbellford Locks***

Situated at the south end of Campbellford beside Locks 11 and 12, the Ranney Gorge Suspension Bridge sits along the Trans Canada Trail and is just a short walk from both the locks and downtown. Once you cross the Ranney Gorge Suspension Bridge, you'll find yourself on the trail system within Ferris Provincial Park. Open year-round, these trails offer opportunities for hiking, cycling, visiting the open-air dog park, or simply soaking in the stunning panoramic views.



***Ranney Gorge Suspension Bridge***





*Tonnie, Campbellford*

# HAIG'S REACH

Keep an eye out! Deer are often spotted crossing the river above the open dam upstream of the lock, as well as giant ospreys. You might also catch sight of waterfowl and, if you're lucky, maybe even a ruffed grouse on this stretch below Rannay Falls.

# FRANKFORD

Just past the lock, at the Frankford Tourist Park, you can enjoy picnicking and swimming. There's a small beach and a playground for added fun. In the town center, you'll also find a golf course where clubs and pull carts are available for rent, and there's a snack bar for refreshments. For those eager to stretch their legs with a hike or a ride, the Lower Trent Trail is accessible just west of downtown on Mill St.





**Recommended restaurant:** Dimitri's Pizzeria and Restaurant - a 15 min walk from the lock on the other side of the river.



**Amenities:** Grocery store, bank, laundromat, pharmacy.

# TRENTON

In Trenton (Quinte-West), take a stroll to see the impressive 90-foot-tall clock tower on Dundas St., constructed in 1888. It boasts clocks on all four sides, chiming on the hour. For aviation enthusiasts, a visit to the National Air Force Museum of Canada is a must.

Located a short drive from the Trent Port Marina (you might want to book a taxi), the museum features 20 vintage aircrafts on display outside in an airpark. Don't miss the chance to see the only restored Halifax bomber in North America, which was recovered from a lake in Norway in 1995.



**Recommended restaurant:** Tomasson's Italian Grille is an upscale casual restaurant located in the heart of Trenton. Reserve your spot at Trent Port Marina or consider parking at Lock 1.



**Amenities:** You'll find everything you need here, including a grocery store, beer store, and pharmacy.



# LOCKS

Every lock on the Trent-Severn is managed by Parks Canada and has its own phone number. You can find current information about lock permits, operating hours and depths on their website: [parks.canada.ca/lhn-nhs/on/trentsevern](https://parks.canada.ca/lhn-nhs/on/trentsevern). You'll find the phone number for each lockstation in the ports guide provided on board.

All vessels must arrive at the designated blue zone at last lockage time. Please plan 30 minutes per lock chamber to lock through. Time to lock through will vary depending in number of boats waiting or in the lock chamber when you arrive. Last lockage is 30 minute prior to posted closing time per lock chamber ...so if the lock closes at 3:30pm and there is one lock, you must be at the blue line by 3:00 pm or Park Canada may not lock you through. At swing bridges, the last bridge swing will be 10 minutes after last lockage time.

# FUEL, WATER & WASTE

## FUEL & WATER

You will have enough fuel on board to last you for 60 plus hours of cruising. The fuel you use is chargeable and payable at the end of your vacation. If you are on an extended vacation and you need to fill up, you can get fuel at the Le Boat Base.



Your water tanks should last a week with regular usage, but it is always good to top up when you can just to make sure. The fresh water tank gauge will show you how much you have left.

WASTE

At regular usage the waste tanks should last four days. It’s always a good idea to keep an eye on the black water gauge in the head (washroom) which will tell you how full the tank is. The pumpout is available at the local marinas on the Rideau Canal, ranging from 35-75 dollars per pumpout.

OPENING TIMES

May 16 - June 19	
Monday to Thursday 10:00pm - 3:30pm	Friday to Sunday and Victoria Day (May 20) 9:00pm - 6:30pm
June 20 - September 1	
Monday to Thursday 9:00pm - 5:30pm	Friday to Sunday and Canada Day (July 1), Civic Holiday (Aug.4), Labour Day (Sep. 1) 9:00pm - 6:30pm
September 2 - October 13	
Monday to Thursday 10:00pm - 3:30pm	Saturday to Sunday and Thanksgiving (Oct 13) 9:00pm - 4:30pm

LAST LOCKAGE

*Follow these guidelines to maximize chances of being locked through at the end of the day:*

- All vessels must arrive at the designated blue zone at last lockage time.*
- At swing bridges, the last bridge swing will be 10 minutes after last lockage time.*





Find us  
on Facebook



Share with us  
on Instagram



Watch us  
on YouTube

# #loveleboat



Parks  
Canada

Parcs  
Canada



AS SEEN ON TV

Great  
Canal  
Journeys





**Disclaimer:** We have endeavoured to ensure that all the information in this Guide is correct at time of printing. However, opening times and prices are subject to change. Attractions, restaurants, locks and even stretches of the canal can close without notice. Le Boat is happy to recommend all of the attractions and eating establishments featured within this Guide. However, they are not owned or managed by Le Boat and, as such, we cannot guarantee the quality of your experience at any particular time. If anything in this guide is not correct, we'd love to hear from you at [guides@leboat.com](mailto:guides@leboat.com) so that we can revise future editions.

**Image credits:** Stuart Pearce, Jane Geoghegan, Claire Mansell & Holger Leue, Dave Snashall, Daria Podemska & Jacek Szymański (Art Studio D), Ken W. Watson, Parks Canada, South Eastern Ontario Tourism. Ottawa Tourism, Ontario's Highlands Tourism, The Town of Perth. And thanks to the restaurants and attractions featured within this guide who have supplied images as well.