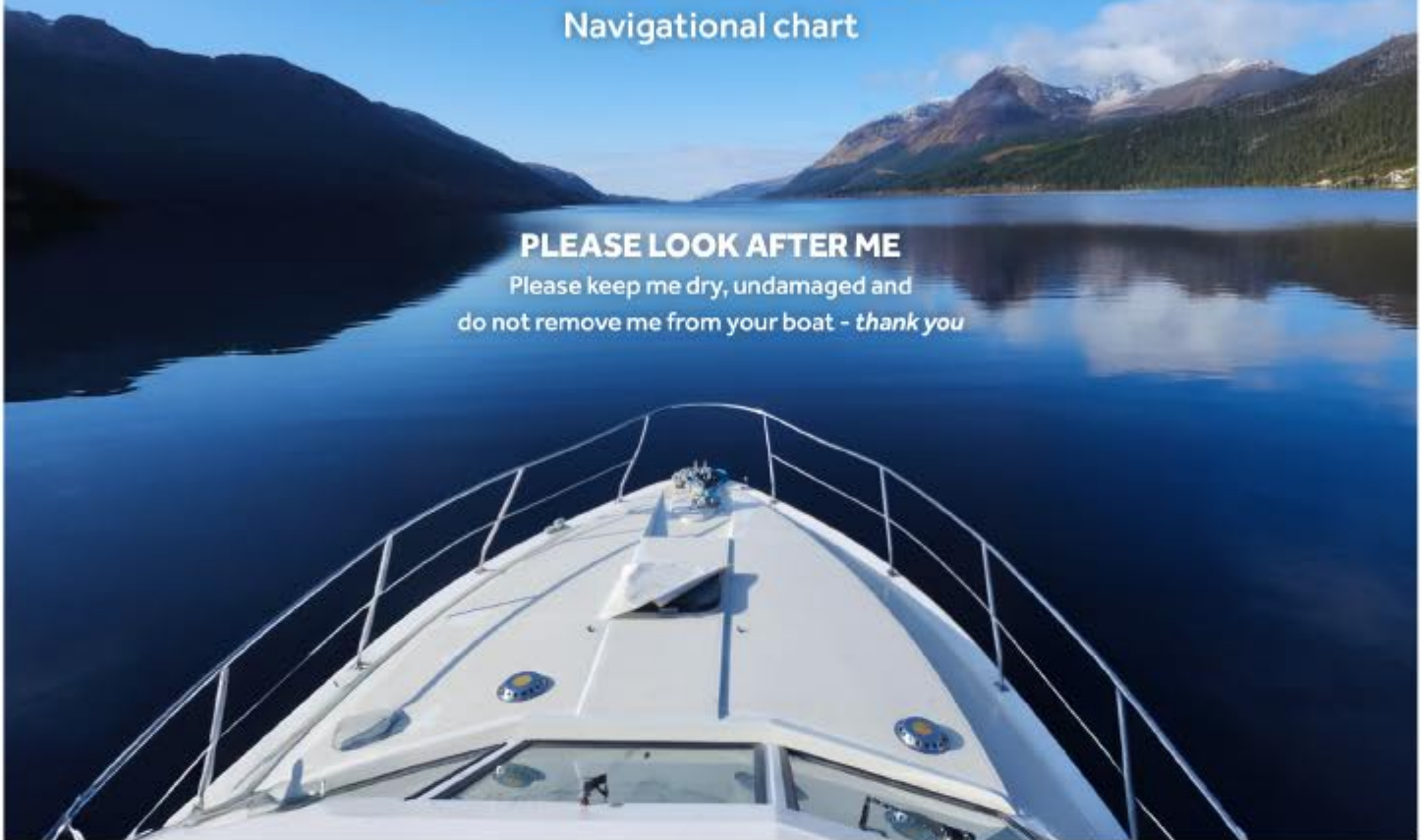


le boat

Caledonian Canal

Navigational chart



PLEASE LOOK AFTER ME

Please keep me dry, undamaged and do not remove me from your boat - *thank you*

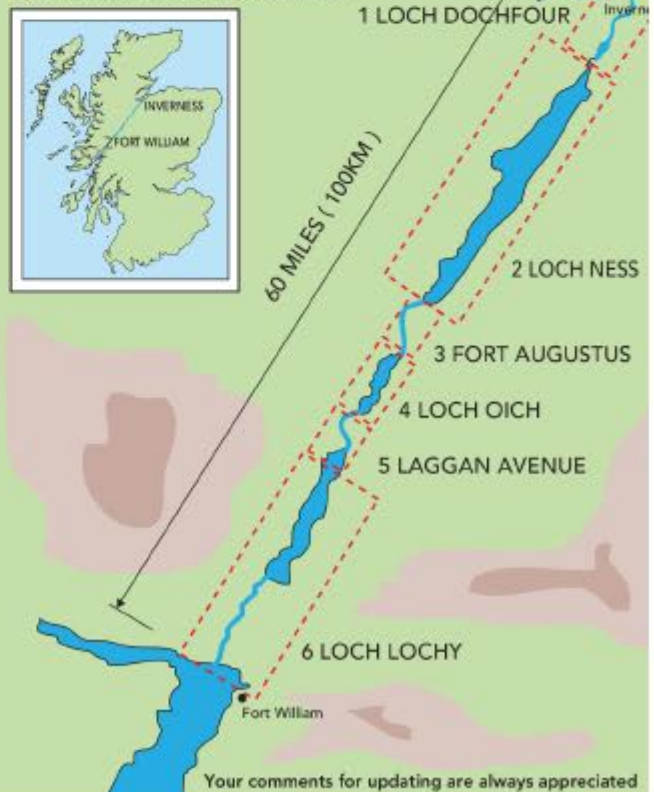
Key to maps

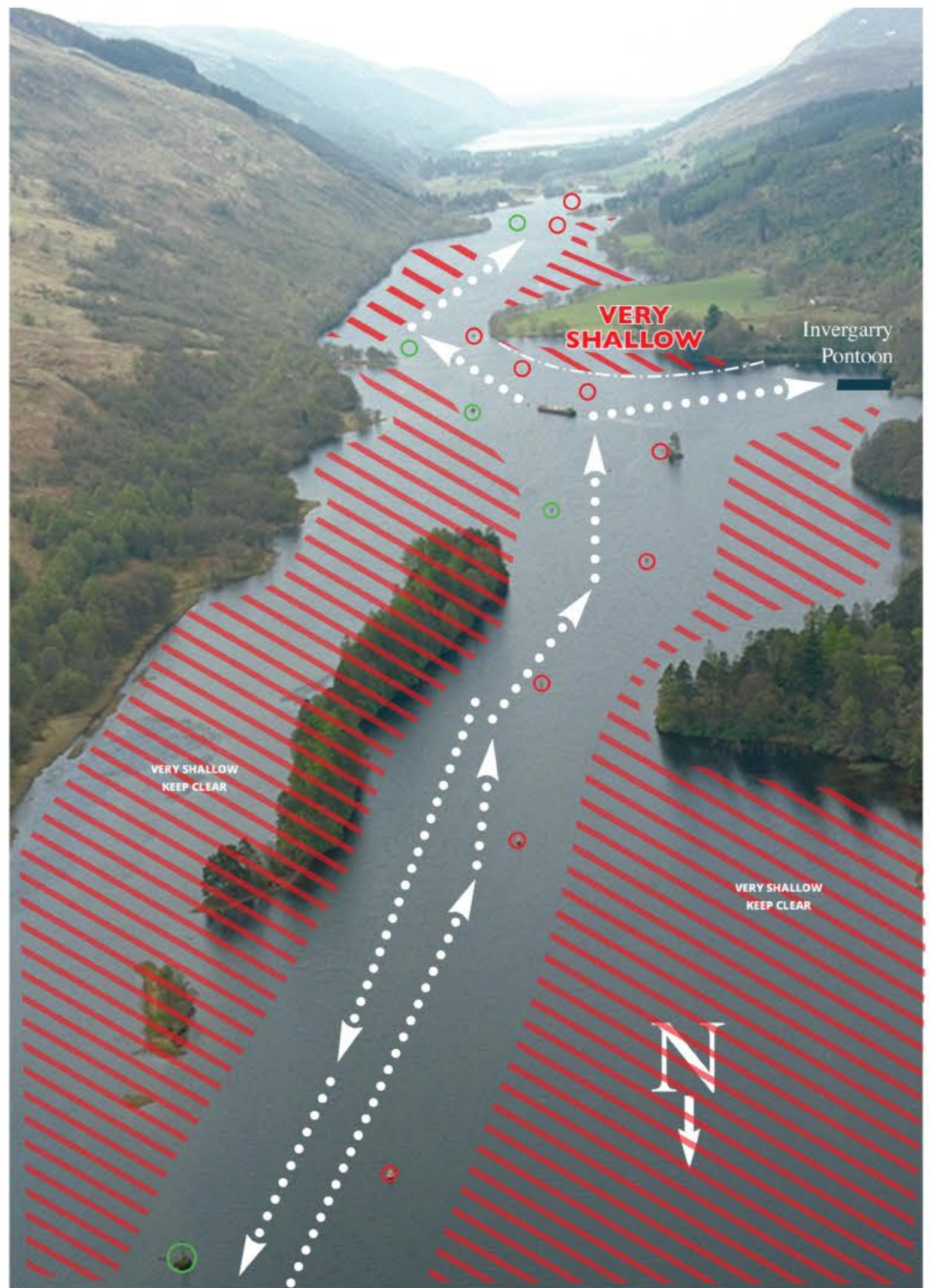
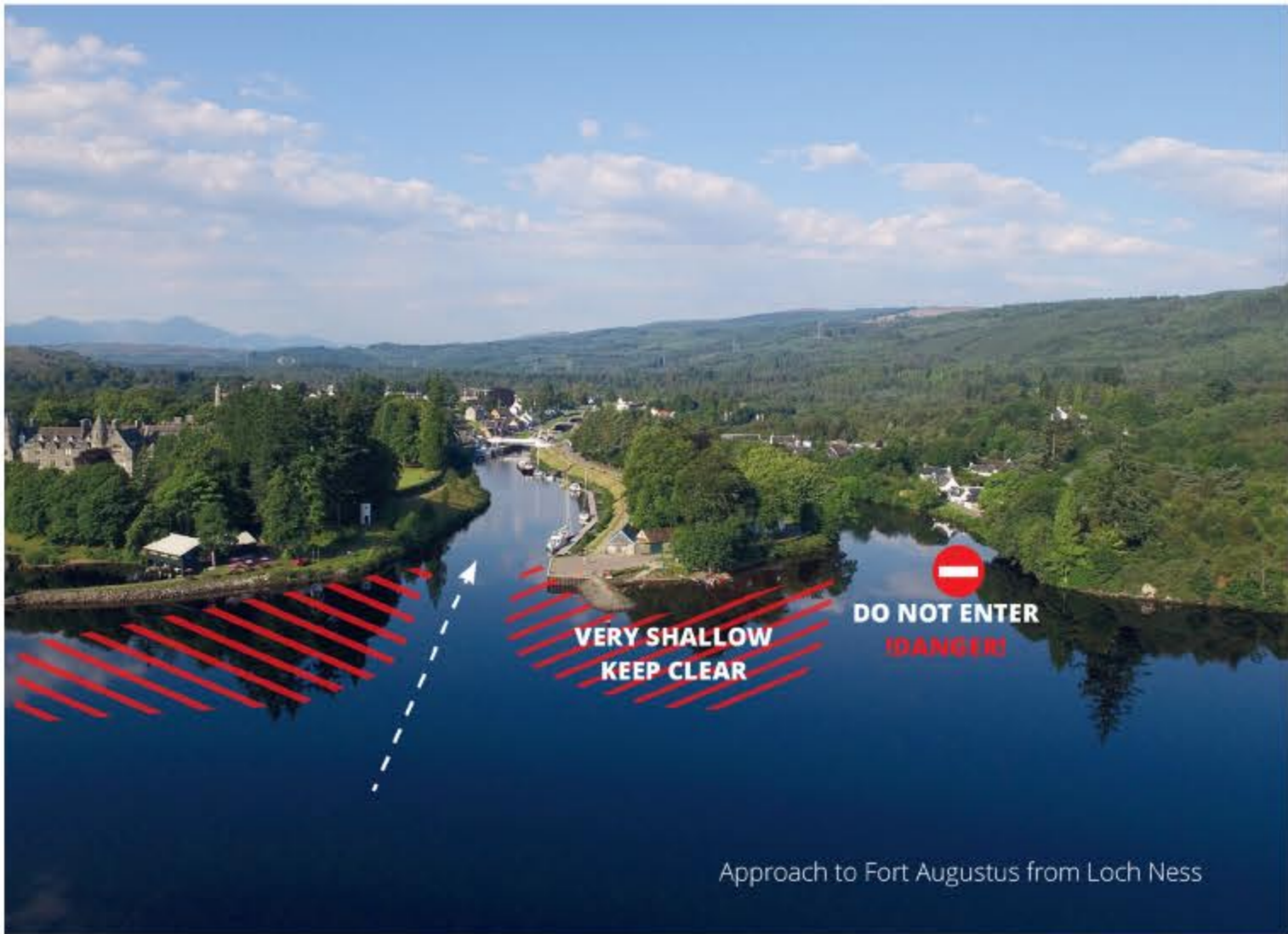
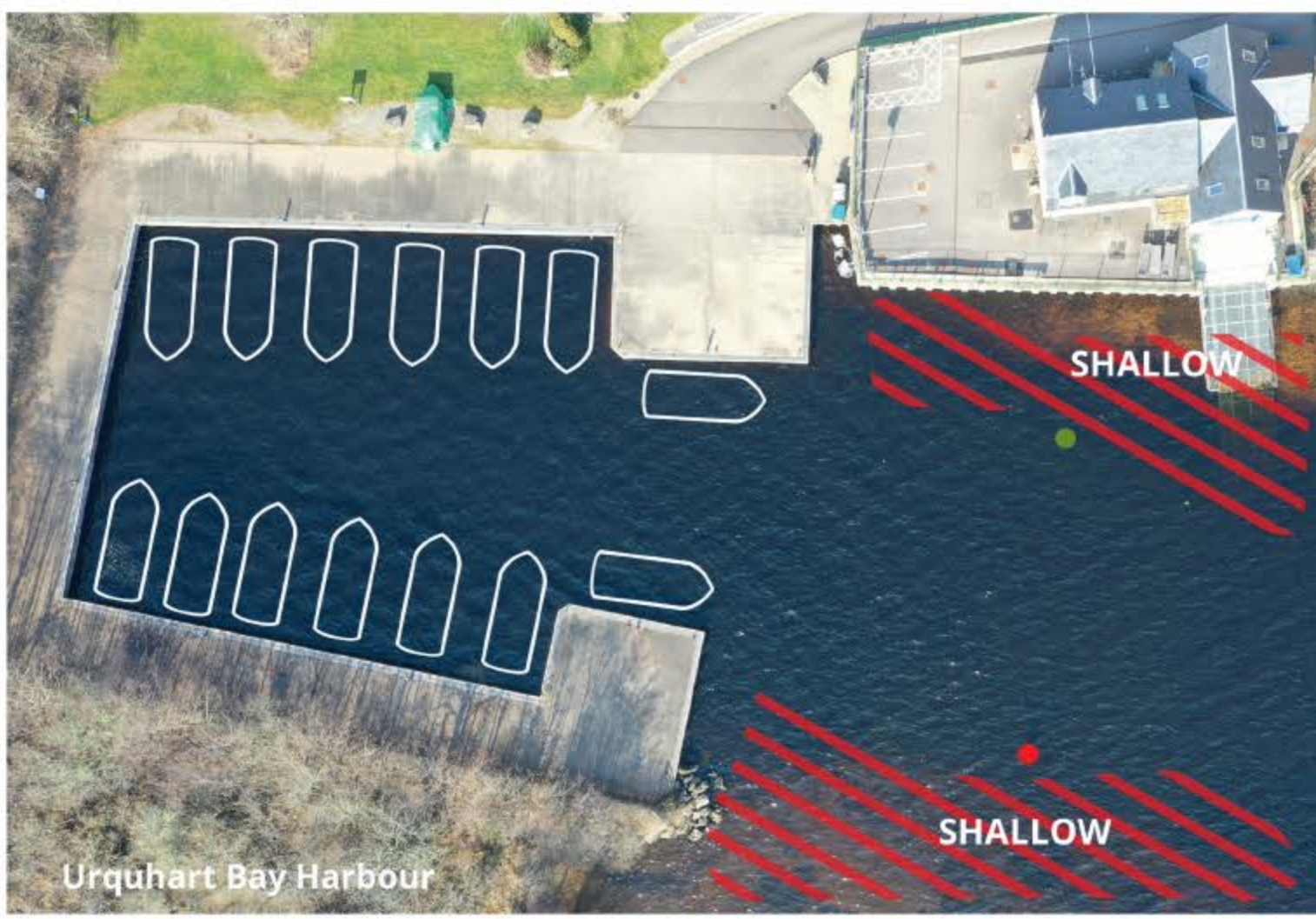
| | | | |
|---------------------|--|--------------------|--|
| Canal/Locks | | Mountains | |
| Green Buoy | | Woodland | |
| Red Buoy | | Litter disposal | |
| Shallow water | | Laundry facilities | |
| Deep water | | Recycling | |
| Very deep water | | Hotel | |
| Shore Power | | View point | |
| Pump out | | Restaurant | |
| Water point | | Castle | |
| Lighthouse | | Pony trekking | |
| Shop | | Forest walks | |
| Telephone | | Picnic site | |
| Conspicuous house | | Golf course | |
| Footpath | | Caravan site | |
| Road | | Chalet development | |
| Toilets and Showers | | Fishing | |
| | | Built up area | |
| | | Pontoon / Jetty | |

Whilst every effort has been made to ensure the accuracy of the information in this leaflet, Le Boat cannot be held responsible for the consequences of any errors that might arise. The details were correct at the time of printing but may subsequently change. The information portrayed on these maps is designed for Caledonian Canal hire boat users only, with 1 metre draft. Highland Wi-Fi public hotspots (self service system) available at several locations along the Caledonian Canal

Under the heading for each section is given the total lengths of that section and the average cruising time needed to complete it.

This map is for general guidance use only. Figures shown are approximate.





Loch Oich is a very shallow Loch. Keep to the Buoyed Channel and middle of the loch at all times.

